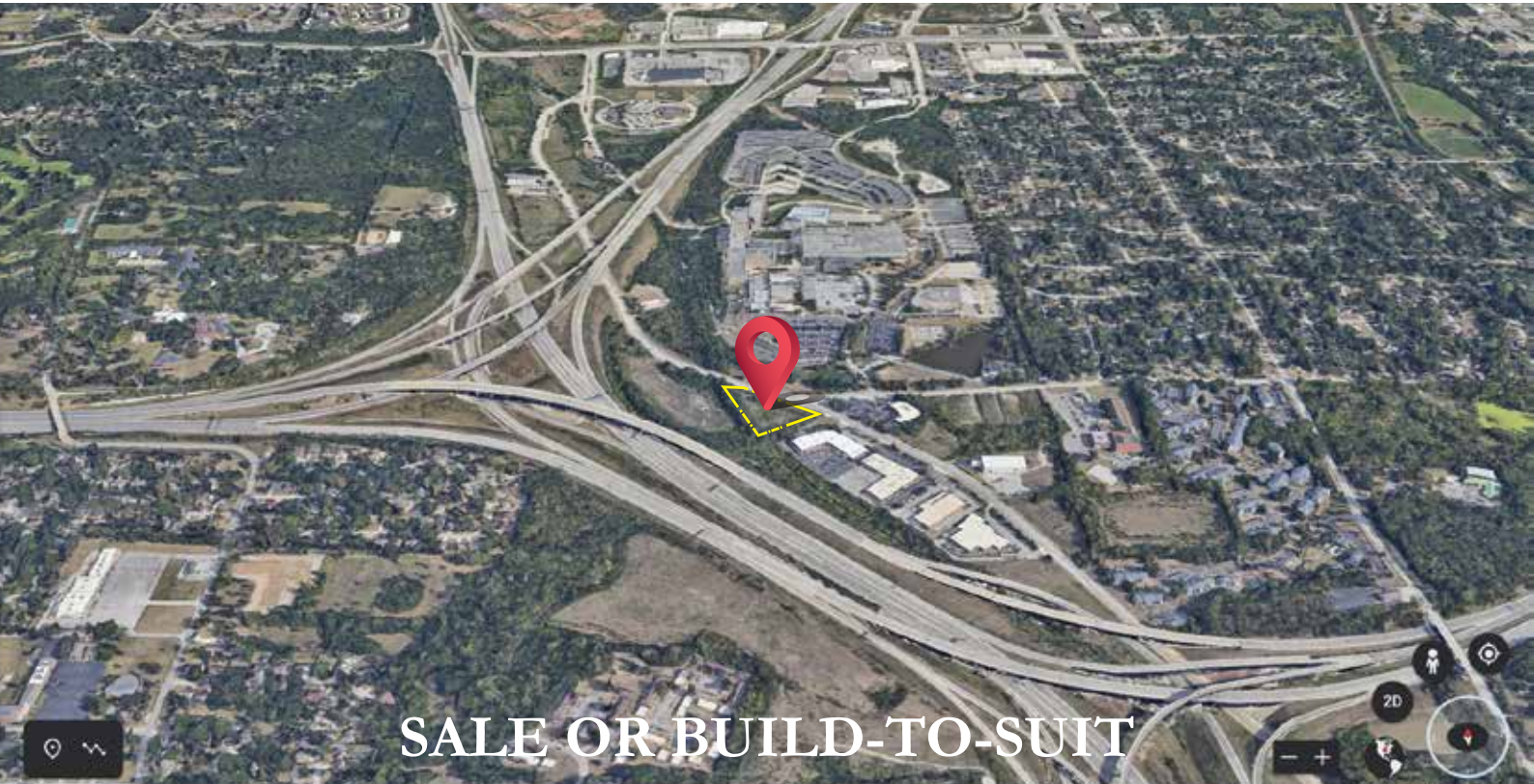




**Watkins &
Partners, LLC**
COMMERCIAL REAL ESTATE



SALE OR BUILD-TO-SUIT

KANSAS CITY, MISSOURI
10300 Hickman Mills Drive

FOR SALE

\$ 200,000

2.24 ACRES

PROPERTY DATA SHEET

SIZE: 2.24 ACRES - 97,482.92 SF
ZONING: M1-P (LIGHT INDUSTRIA, PLANNED DISTRICT)
WATER: 12" MAIN
GAS: 4"
ELECTRIC: KCPL WEST SIDE OF HICKMAN 3 PHASE
SEWER: YES
LEGAL: LOT 1, HICKERMAN BUSINESS CENTER
TOPO: GRADED
FLOODPLAIN: NO

CONTACT US

RICK WATKINS

 **816 694 5555**  **RICK.WATKINS@WATKINSRE1.COM**

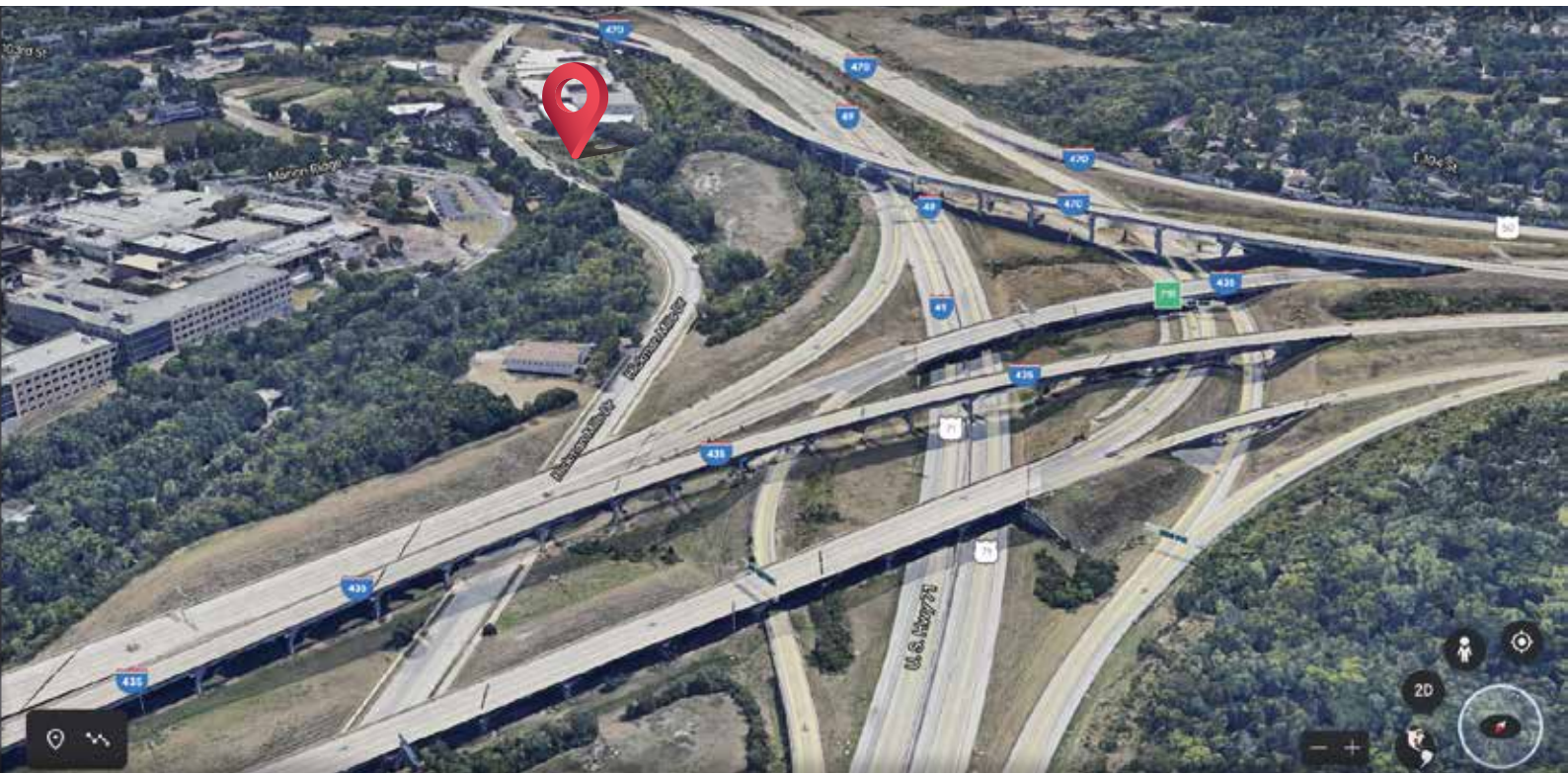
ALL OF THE INFORMATION FURNISHED REGARDING PROPERTY FOR SALE OR LEASE IS FROM SOURCES BELIEVED TO BE RELIABLE, BUT WE CANNOT GUARANTEE THE ACCURACY THEREFORE AND SAME IS SUBMITTED SUBJECT TO ERRORS, CHANGE, OF PRICE OR CONDITIONS. PRIOR SALE OR LEASE WITHOUT NOTICE.



**Watkins &
Partners, LLC**
COMMERCIAL REAL ESTATE



10300 HICKMAN MILLS DRIVE, KANSAS MISSOURI
NEAR U.S. HIGHWAY 71, I-435, I-470, AND I-49



CONTACT US



816 694 5555



RICK.WATKINS@WATKINSRE1.COM

ALL OF THE INFORMATION FURNISHED REGARDING PROPERTY FOR SALE OR LEASE IS FROM SOURCES BELIEVED TO BE RELIABLE, BUT WE CANNOT GUARANTEE THE ACCURACY THEREFORE AND SAME IS SUBMITTED SUBJECT TO ERRORS, CHANGE, OF PRICE OR CONDITIONS. PRIOR SALE OR LEASE WITHOUT NOTICE.