



**Watkins &
Partners, LLC**
COMMERCIAL REAL ESTATE

www.watkinsre1.com

FOR SALE
10 ACRES



RICK WATKINS

816 694 5555 RICK.WATKINS@WATKINSRE1.COM

We obtained the information above from sources we believe to be reliable. However, we have not verified its accuracy and make no guarantee, warranty or representation about it. It is submitted subject to the possibility of errors, omissions, change of price, rental or other conditions, prior sale, lease or financing, or withdrawal without notice. We include projections, opinions, assumptions or estimates for example only, and they may not represent current or future performance of the property. You and your tax and legal advisors should conduct your own investigation of the property and transaction.



**Watkins &
Partners, LLC**
COMMERCIAL REAL ESTATE

www.watkinsre1.com



OVER 1400' HIGHWAY FRONTAGE

SUITABLE FOR: RESTAURANT - FAST FOOD;
SERVICE - STORAGE

COMPREHENSIVE PLAN INCLUDES
MULTI FAMILY

PROPERTY DATA SHEET



816 694 5555



[RICK.WATKINS@WATKINSRE1.COM](mailto:rick.watkins@watkinsre1.com)

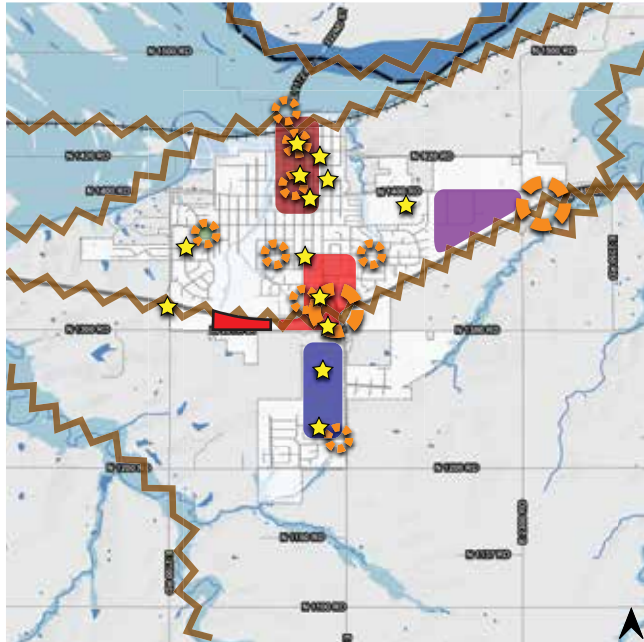
RICK WATKINS

We obtained the information above from sources we believe to be reliable. However, we have not verified its accuracy and make no guarantee, warranty or representation about it. It is submitted subject to the possibility of errors, omissions, change of price, rental or other conditions, prior sale, lease or financing, or withdrawal without notice. We include projections, opinions, assumptions or estimates for example only, and they may not represent current or future performance of the property. You and your tax and legal advisors should conduct your own investigation of the property and transaction.



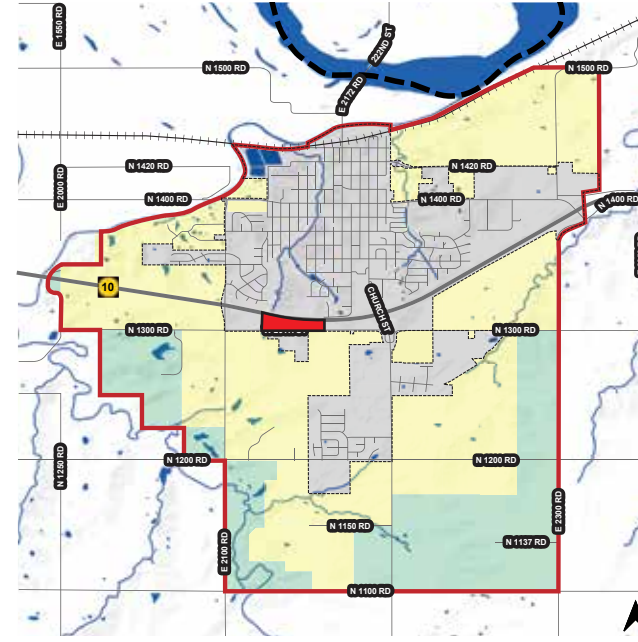
**Watkins &
Partners, LLC**
COMMERCIAL REAL ESTATE

www.watkinsre1.com



- Legend**
- District
 - Path
 - Edge
 - Node
 - Landmark
 - Railroad
 - Park
 - Hydrology
 - County
 - City Limits

Visual Analysis



- Legend**
- Tier 1
 - Tier 2
 - Urban Reserve
 - UGA Limit
 - Railroad
 - Street
 - Highway
 - City Limit
 - County Limit

Urban Growth Area

EUDORA COMPREHENSIVE PLAN

RICK WATKINS



816 694 5555



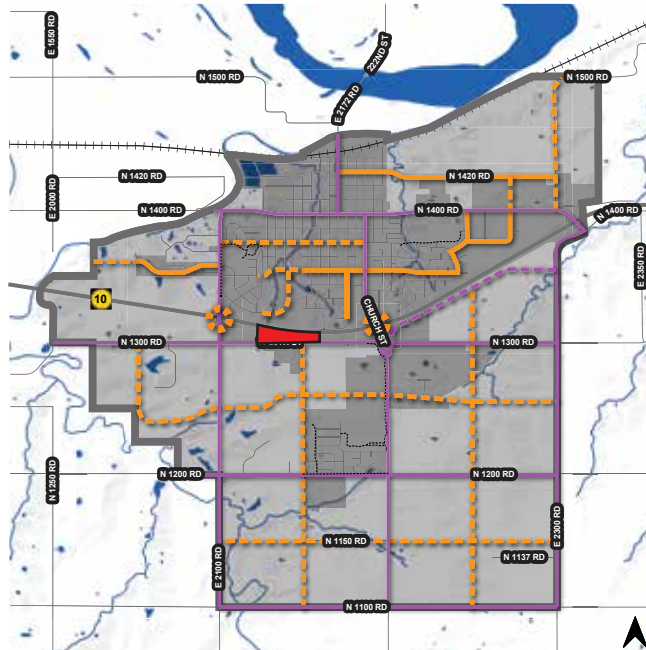
RICK.WATKINS@WATKINSRE1.COM

We obtained the information above from sources we believe to be reliable. However, we have not verified its accuracy and make no guarantee, warranty or representation about it. It is submitted subject to the possibility of errors, omissions, change of price, rental or other conditions, prior sale, lease or financing, or withdrawal without notice. We include projections, opinions, assumptions or estimates for example only, and they may not represent current or future performance of the property. You and your tax and legal advisors should conduct your own investigation of the property and transaction.

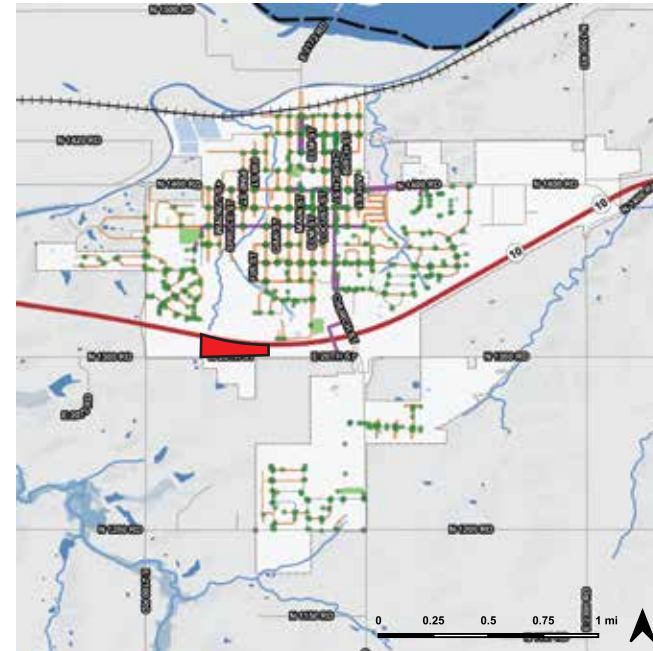


**Watkins &
Partners, LLC**
COMMERCIAL REAL ESTATE

www.watkinsre1.com



Future Street Network



Sidewalk Inventory

FUTURE STREET NETWORK

RICK WATKINS



816 694 5555



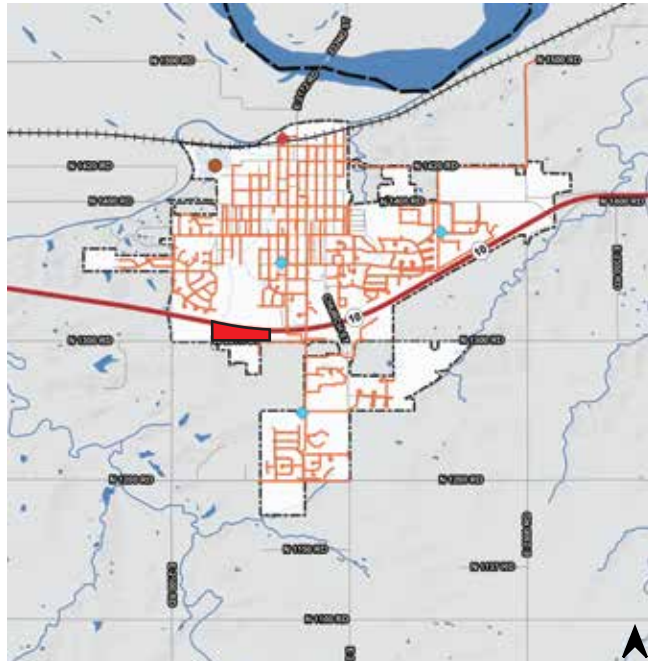
RICK.WATKINS@WATKINSRE1.COM

We obtained the information above from sources we believe to be reliable. However, we have not verified its accuracy and make no guarantee, warranty or representation about it. It is submitted subject to the possibility of errors, omissions, change of price, rental or other conditions, prior sale, lease or financing, or withdrawal without notice. We include projections, opinions, assumptions or estimates for example only, and they may not represent current or future performance of the property. You and your tax and legal advisors should conduct your own investigation of the property and transaction.



**Watkins &
Partners, LLC**
COMMERCIAL REAL ESTATE

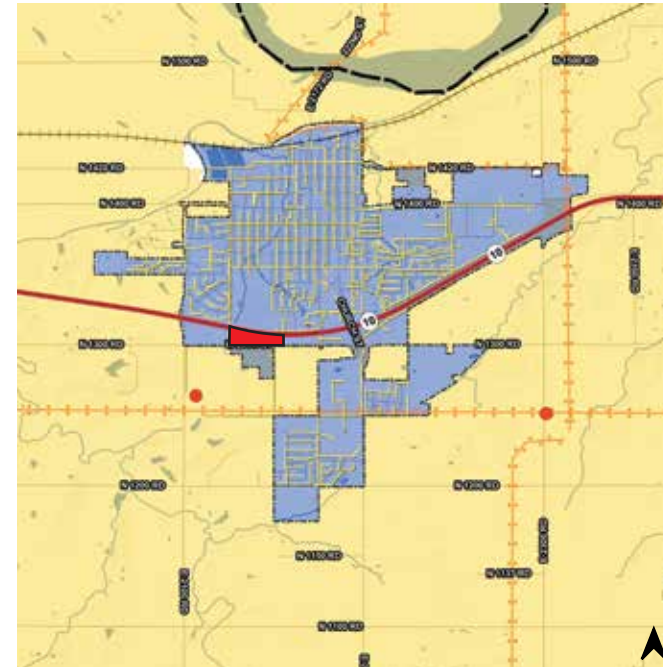
www.watkinsre1.com



Legend

- Storage Basin
- Water Tower
- Water Supply or Treatment Facility
- Water Main
- Highway
- Road
- Railroad
- Hydrology
- County
- City Limits

Water Infrastructure



Legend

- City Electric Service Territory
- Wester Service Territory
- Electric Line
- Electric Transmission Line
- Electric Substation
- Highway
- Road
- Railroad
- Hydrology
- County
- City Limits

Electrical Service

WATER AND ELECTRICAL NETWORKS



816 694 5555



[RICK.WATKINS@WATKINSRE1.COM](mailto:rick.watkins@watkinsre1.com)

We obtained the information above from sources we believe to be reliable. However, we have not verified its accuracy and make no guarantee, warranty or representation about it. It is submitted subject to the possibility of errors, omissions, change of price, rental or other conditions, prior sale, lease or financing, or withdrawal without notice. We include projections, opinions, assumptions or estimates for example only, and they may not represent current or future performance of the property. You and your tax and legal advisors should conduct your own investigation of the property and transaction.